

4

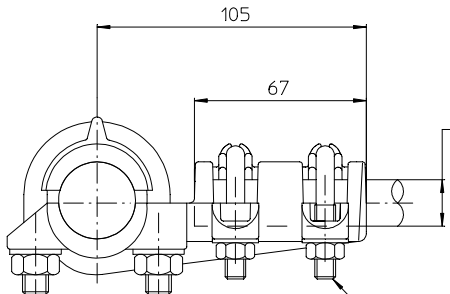
3

2

1

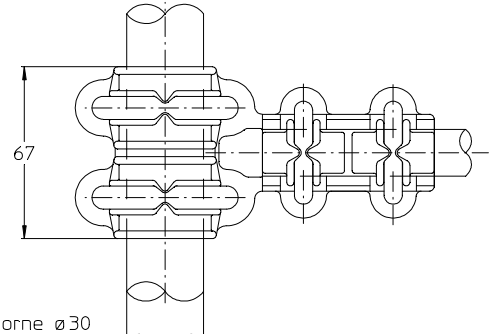
THIS DRAWING IS UNPUBLISHED.
 DIFFUSION RESEINTE AMP
 © COPYRIGHT 1997 BY AMP INCORPORATED. ALL RIGHTS RESERVED.
 TOUS DROITS RESERVES

LOC	DIST	REVISIONS			
P	LTR REV	DESCRIPTION MODIFICATIONS	DATE	DWN DESS.	APVD APP.
	FH 2				
		EQ00-0204-02	2-May-02	EN	HV



Cable ø10 à 18,2
 Cable 10DIA to 18.2
 Cable ø10 à 18.2

- | | | | | | |
|-------|---|---|---|--|-------|
| 21 Nm | { | 2 Brides + étriers ø10 alliage de cuivre
2 Caps + U bolts 10DIA copper alloy
2 Bidas + borquillas ø10 aleacion de cobre | } | 2 Brides + étriers ø8 alliage de cuivre
2 Caps + U bolts 8DIA copper alloy
2 Bidas + borquillas ø8 aleacion de cobre | 10 Nm |
|-------|---|---|---|--|-------|



Tube ou borne ø30
 Tube or Terminal 30DIA
 Tubo o Borna ø30

<small>THIS DRAWING IS A CONTROLLED DOCUMENT FOR AMP INCORPORATED. IT IS SUBJECT TO CHANGE AND THE CONTROLLING ENGINEERING ORGANIZATION SHOULD BE CONTACTED FOR THE LATEST REVISION. CE PLAN EST UN DOCUMENT CONTROLÉ PAR AMP INCORPORATED. IL EST SUSCEPTIBLE D'ÊTRE REVISÉ, CONTACTER LE SERVICE TECHNIQUE D'AMP SIMEL POUR OBTENIR LA DERNIÈRE REVISION.</small>		DW/DESSINE NIVS 2-May-02 CHK/VERIFIE ROYER 2-May-02	tyco Electronics	SIMEL 21220 Gevrey Chambertin FRANCE
DIMENSIONS: mm	TOLERANCES UNLESS OTHERWISE SPECIFIED PER TOLERANCES NON SPECIFIEES SELON : -	APVD/APPROUVE VIAL PRODUCT SPEC SPEC. PRODUIT - 02BFH0051 APPLICATION SPEC SPEC. APPLICATION -	NAME TITRE 915 30B 18	
	MATERIAL MATIERE -	FINISH FINITION -	SIZE FORMAT A3	CAGE CODE 00779
		WEIGHT MASSE APPROX. 1.2 KG	DRAWING NO NO PLAN C=706769	
		CUSTOMER DWG / PLAN CLIENT	UNQUEMENT FOUR REFERENCE	SCALE ECHELLE 1/2
			SHEET FEUILLE 1 OF 1 DE 1	REV D

ITEM: ○